



Prom Dress Guide

2024

Prom Dress Code (from handbook)

- NO VISIBLE CLEAVAGE OR MIDRIFF (front, back, and/or side) - NO 2 PIECE DRESSES. The dress must consist of solid fabric throughout-- NO SHEER MATERIAL MAY BE USED TO COVER THESE AREAS.
- Strapless dresses are permitted as long as the neckline is straight across.
- The neckline should not be lower than four fingers below the collarbone and cannot extend into the breast area, showing cleavage of any type.
- The material can not be sheer, very thin, or spandex- it must be a solid material to ensure modesty and dignity of our young ladies.

Prom Dress Code Continued

- The backs must be modest, dipping no lower than can be worn with a standard strapless bra that fits at the shoulder blade. No bra parts can be visible when the dress is properly worn!
- The torso midsection must be completely covered- no cutouts, holes, slits, illusion fabric, or straps, etc. Sheer/illusion fabric material can NOT be used to cover this area- Solid material must be used.
- Any slit in the dress should be no higher than mid thigh
- Dress length should not be any shorter than four fingers above the top of the kneecap
- Spaghetti straps and halter tops are acceptable following the guidelines from above concerning cleavage

Prom Dress Code Continued...

- **All dresses must be approved by administration prior to the event. Pictures can be used but must CLEARLY show the front, side, and back of the dress.**
- **Note: Just because a dress has been approved previously does not mean it will be approved this time. Please ensure your choice fits the aforementioned code.**
- **ANYONE NOT IN COMPLIANCE WITH THIS AFOREMENTIONED CODE WILL BE DENIED ACCESS TO THE EVENT. STUDENTS THAT BRING NON-SHCS STUDENTS AS GUESTS ARE RESPONSIBLE FOR MAKING SURE THEIR GUESTS ARE IN COMPLIANCE. NO EXCEPTIONS.**

These dresses are appropriate:



These dresses are also appropriate:



All of these dresses can be worn with a standard strapless bra, do not have any cut outs in the torso, and the necklines are modest, not showing any of the bust region.

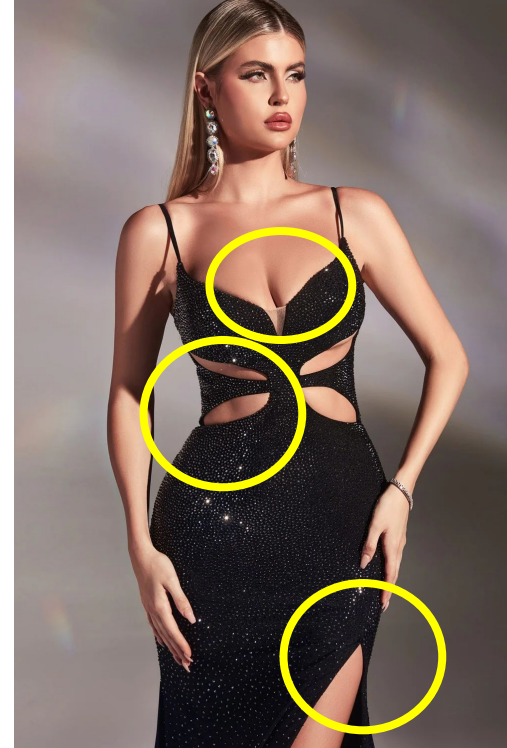
These dresses are NOT acceptable:



Corset back needs a solid piece of fabric behind it



No cut outs on torso, slit too high



Bust line too low, cut outs on torso, slit too high

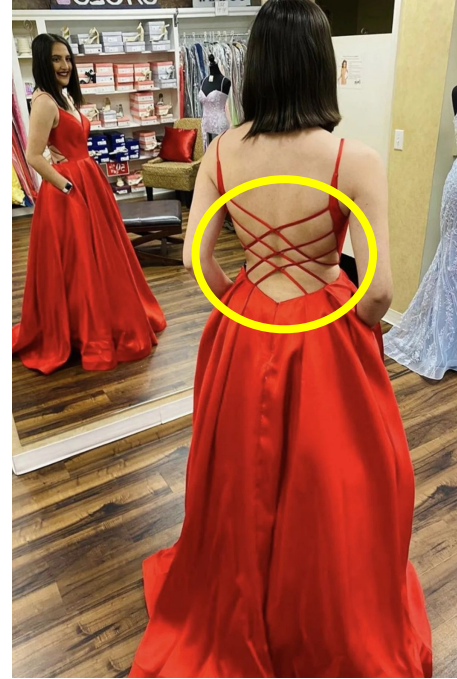
These dresses are also not acceptable:



Side cut outs on torso
bust line too low



2 piece dresses are
not allowed, corset
open back



Back is too open; cannot be
worn with a standard
strapless bra

The popular corset is approved IF there is a panel of fabric behind the corset in the circled area. Otherwise it is NOT approved. These are NOT approved.



Here are examples of altered corset backs with a panel of fabric:



- If you have questions...ASK.
- When you go shopping...send pictures to Mrs. Taylor for instant response. (Yes, I know to be available during prom dress shopping season)
- ALL DRESSES MUST BE APPROVED VIA PICTURE SHOWING THE FRONT, SIDE (with arms raised), AND BACK VIEWS. Pictures are to be sent to Mrs. Taylor: jtaylor@shmuenster.com
- In your picture, if you plan on getting alterations please tell me, then send an updated picture with the alterations prior to Prom.
- **Thank you for being compliant and helping our young ladies be the picture of class and modesty for our SHCS Prom 2024.**